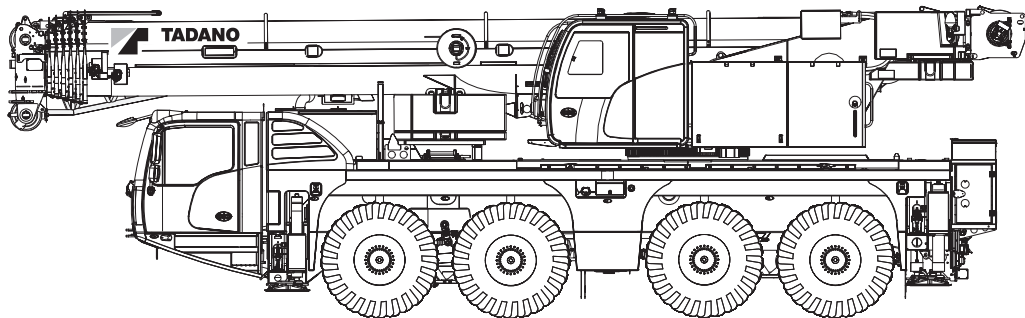


# Build manual



**TADANO AC 4.080.1**  
TRANSPORT CRANE



# Tadano AC 4.080-1

## Build index

●	Main components	4-5
○	Tools and pins	6-7
○	Configurate the model to operational mode	8-15
○	Configurate the model to transport mode	16-19
○	Product data	20-26
○	Contact and service	27

# Main components



**A** Basic crane



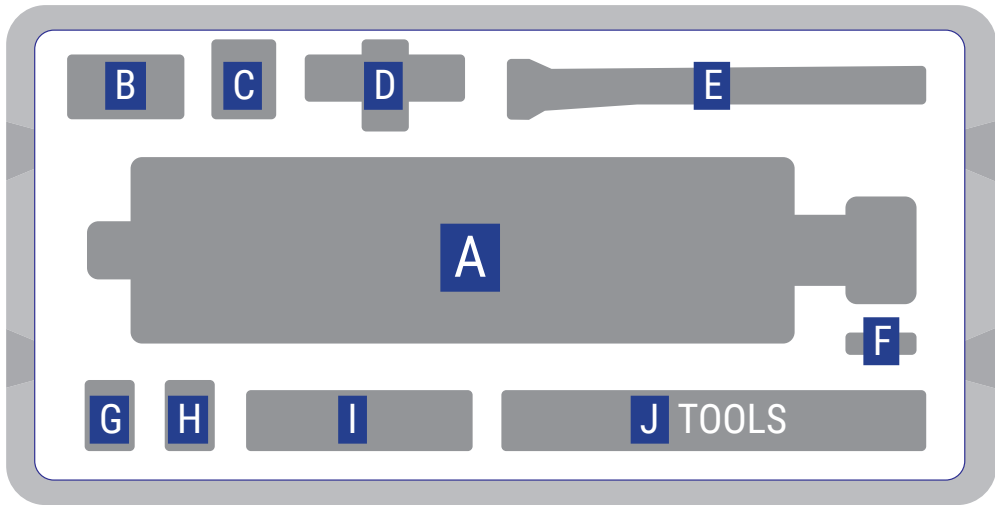
**C** Outrigger pads



**D** Counterweight plates



**E** Main boom extension



**F** Outrigger pads



**G** Counterweight plates left **H** Right



**I** Ladder

# Tools and pins

Tweezer



Plier



Crawler tool



Hoist tool



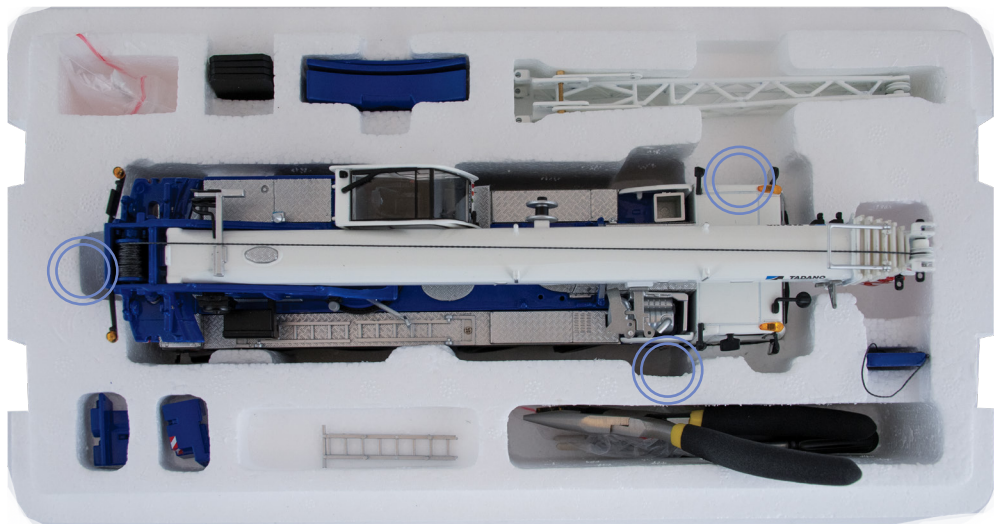
Hex tool





# YOUR MODEL CONTENT

To take out the **Crane** from the box, use both hands on the below positions.



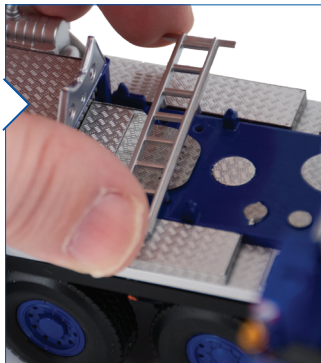


# Configure the model to operational mode

## 2 LADDERS

Turn the upper structure and place ladder I on the base plate of the model.

The crane further has four ladders which can be turned counterclockwise and lowered, allowing easy access for the operator.



## 1 DEPLOY

Place the **Crane** on a flat surface for assembly.

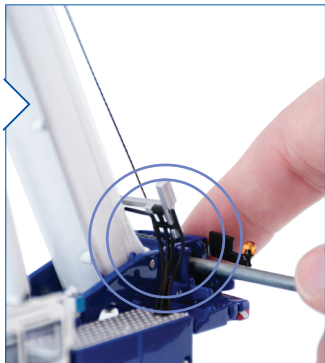
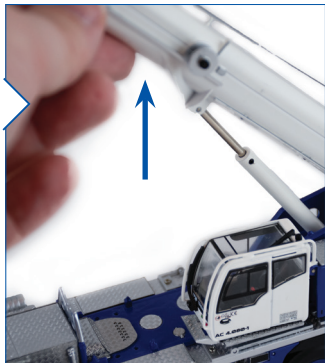
Start with extending the outriggers and turn the outrigger pads counterclockwise to extend them to lift the crane.



### 3 RAISING THE BOOM

Raise the boom to the desired angle and secure the main cylinder using the hex tool.

The boom can be extended to six times it's own length, To do this, first add the hook weight to the hook and raise the boom sections to the desired height.



### 4 USING THE HOIST

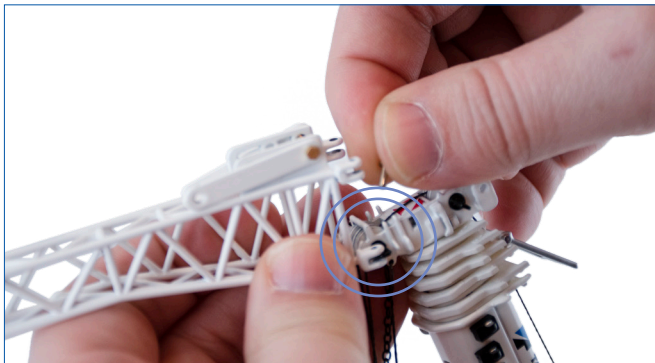
Operate the hoist with the hoist tool. Make sure the keep tension on the rope by adding the hook weight to the hook.

## 5 EXTENDING THE BOOM

The boom can be extended with the **main boom extension**.

First, place the boom extension first on the two lower connections of the main boom.

Secure it with two pins from **bag 2**. (One on each side)



## 6

## POSITION EXTENSION

The extended boom can be positioned in four configurations.

Adjust it by unscrewing the brass screw connected on the extension boom.

Connect it to the main extension using two short pins from **bag 1**.



## 7 REROUTE THE CABLE

When using the “Main boom extension“, the main cable needs to be rerouted.

Cut the cable at the hook. Then reroute it over the back of the extension, before reconnecting it to the hook.



## 8 CABIN

Use the tweezers to extend the catwalk for the worker.

Tilt the cabin in the upward position for optimal view in lifting position.

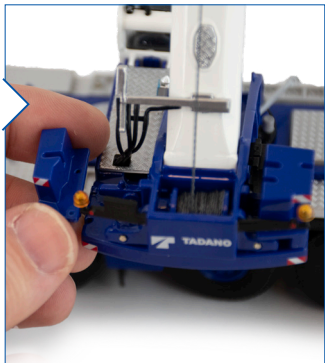


## 9 ADDING WEIGHT

First add the Central ballast left and right on the rear of the crane. Wiggle it gently into place.

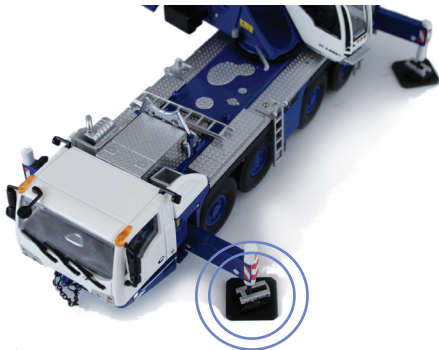
Lastly add the Counterweight plates to the rear of the crane.

Position it a bit to the right and slide it to upwards to the left.



## 10 OUTRIGGER PADS

When positioning the crane to the desired position. Make sure you place the “Outrigger pads” under the outriggers to support it's weight.

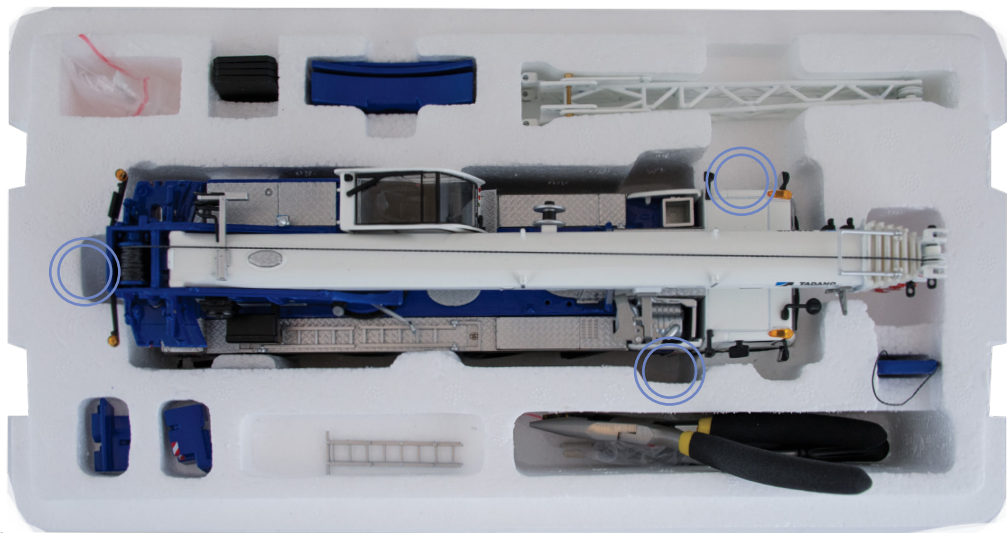




READY TO  
START LIFTING!

# YOUR MODEL CONTENT

To take out the **crane** from the box, use both hands on indicated places.





# Configure the model to transport mode

## 2 HOOK THE BOOM

Make sure the hook is connected to the front of the vehicle.

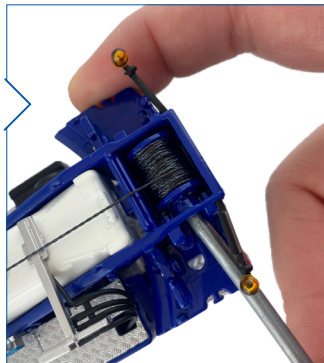
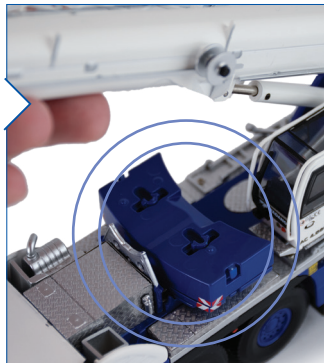
Use the **hoist tool** to tighten the cable.



## 1 COUNTERWEIGHT

Place the **crane** on a flat surface for assembly.

Raise the boom and position the counterweight plates on the undercarriage.

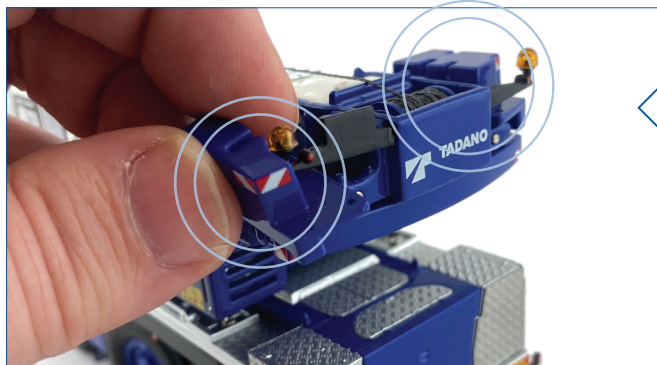


### 3 BOOM EXTENSION

While in transport the **Main boom extension** can be attached to the crane.

Use pin from **bag 3** to unfold the bracket on the main boom.

Position it on the right side as pictures here.



### 4 WEIGHT ON THE CRANE

Place the left and right central ballast on the crane.

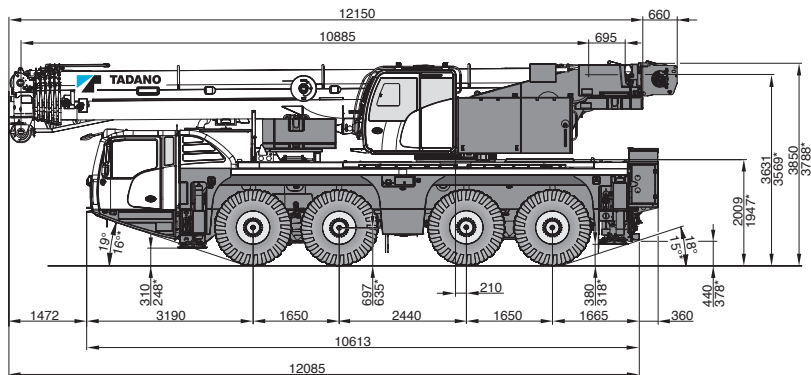
READY FOR  
TRANSPORT!

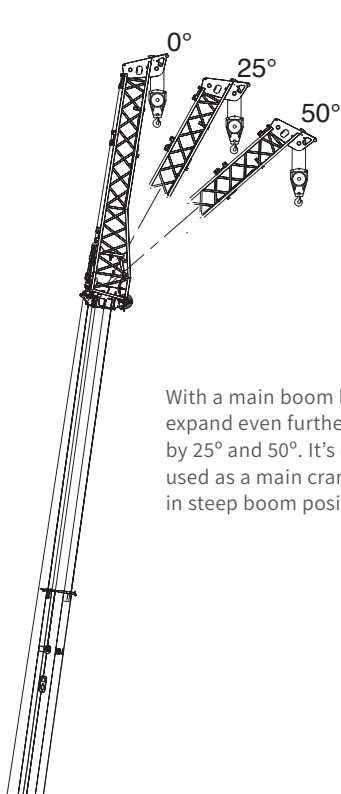


# TADANO AC 4.080-1

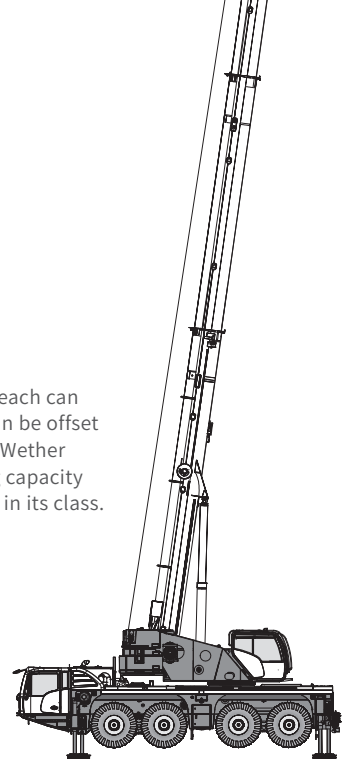
## Description 1:50 crane

The AC 4.080-1 blends outstanding reach with exceptional versatility. It's compact size on four axles gives this all terrain crane best-in-class jobsite accessibility. Fully equipped and roadable within a 16.5t axle load, so that extra transport is rarely needed.





With a main boom length of 60 / 196.9 ft, the AC 4.080-1s reach can expand even further with a 6.5m (21.3 ft) extension that can be offset by 25° and 50°. It's capacity is a generous 23.8t / 26.2 USt. Whether used as a main crane or a powerful assist crane, the lifting capacity in steep boom positions makes the AC 4.080-1 unbeatable in its class.



# MODEL

## Features

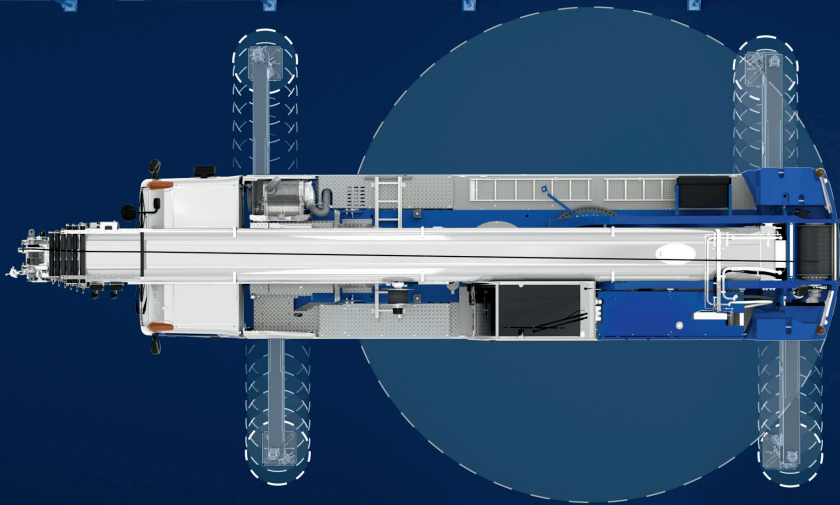
The realistic and functioning scale model of this 4-axle crane is made of die-cast, resulting in a high-quality model. A few of the many features are the jib that can be attached to the main boom and can also be stowed away on the side of the model in transport mode, the realistic steering configuration on all four axles and the functional upper case cabin that can be tilted upwards.











Enjoy the little things!

If you have any questions, don't  
hesitate to contact us via:

[www.imcmodels.eu](http://www.imcmodels.eu)

[info@imcmodels.eu](mailto:info@imcmodels.eu)

[facebook.com/imcmodels.eu](https://facebook.com/imcmodels.eu)

For service and repairs, contact our  
service team via:

[www.imcmodels.eu](http://www.imcmodels.eu) > Service

or email to [service@imcmodels.eu](mailto:service@imcmodels.eu)



Industrial Merchandising Concepts B.V.

HEAD OFFICE  
Peppelkade 23  
3992 AL Houten  
The Netherlands

+31 (0)30 721 0661  
[info@imcmodels.eu](mailto:info@imcmodels.eu)