

A white line-art illustration of a TADANO AC 2.040-1 crane mounted on a truck chassis, set against a blue background. The illustration shows the crane's boom, hydraulic system, and the truck's cab and wheels.

BUILD MANUAL
TADANO AC 2.040-1
ALL TERRAIN CRANE

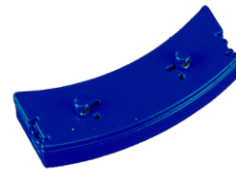
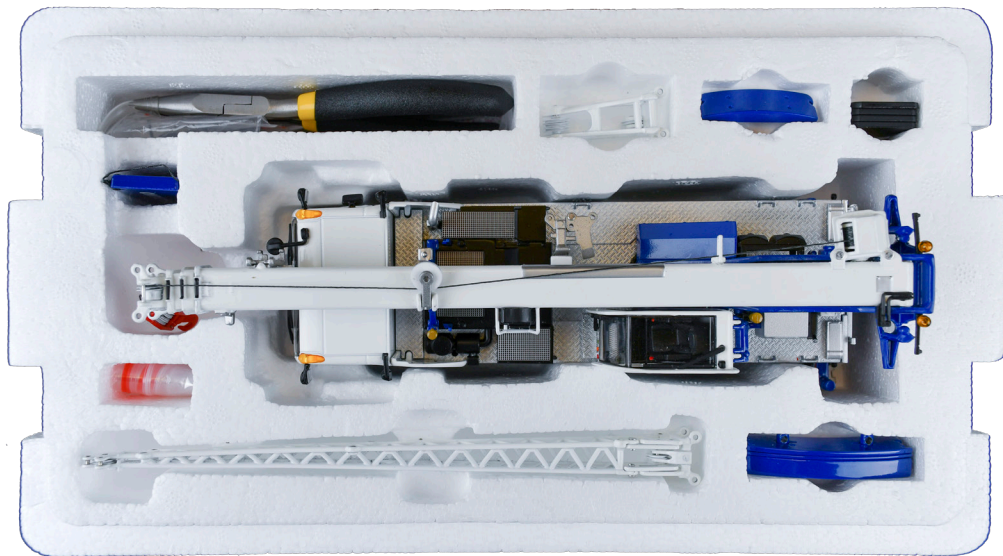
Tadano AC 2.040-1

Build index

| | | |
|---|----------------------------|-----------|
| ● | Model content | 2 |
| | Model and Parts | 2 |
| | Tools | 5 |
| | Pins | 6 |
| ○ | Transport mode | 7 |
| ○ | Assembly | 8 |
| | Operational Mode | 8 |
| | Jib Assembly | 14 |
| ○ | Product information | 20 |
| ○ | Contact | 23 |

MODEL CONTENT

Main components



Counterweights



Counterweight Back Plate



Lattice swing-away Jib



MS Runner Jib



Hook weight



Outrigger Mats



Basic crane

Tools



Plier



Winch key



Hex key



Tweezer

Pins



Pins bag 1



Pins bag 2



Pins bag 3



Pins bag 4



Pins bag 5

Transport mode



TRANSPORT CONFIGURATION WITH JIB



TRANSPORT CONFIGURATION

ASSEMBLY

Operational Mode

1. OUTRIGGERS

Extend the outriggers outwards.

Secure the outriggers with the outriggers pins from **bag 5**.



Place the outrigger mats under the outrigger mats.



Turn the outriggers clockwise to extend them to lift the crane.



2. LIFTING THE BOOM

Position the boom upwards in your preferred angle and secure it by fixing the hexagon bolts in the boom cylinder with the **Hex Key**.





3. USING THE HOIST

Operate the hoist with the **Winch Key**. Make sure to keep tension on the rope by adding the hook weight to the hook.



4. COUNTERWEIGHT

Rotate the upper structure 90 degrees.

Place the main counterweight on the backside of the crane and push it upwards.

Secure it in place with pins from **bag 1**.



Click the Counterweight Back Plate into position.

5. CABIN

Angle the cabin upwards and pull out the side step with the tools.



READY TO START LIFTING!

The crane is now built in the normal operational configuration.

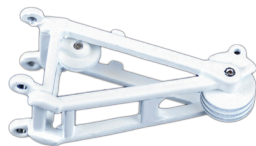


Jib Assembly

PARTS NEEDED

With the setup you can chose from three boom configuration.

1. Withouth Jib
2. With MS Runner Jib
3. With Lattice swing-away Jib



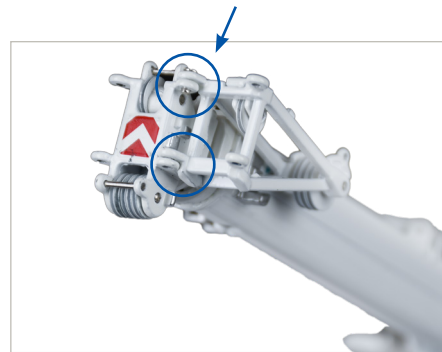
MS Runner Jib



Lattice swing-away Jib

1. MS RUNNER JIB

Place the MS Runner Jib on the left side of the boomhead, for Transport configuration, and lock it in place with pins from **bag 4**.

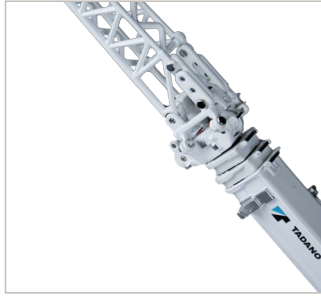


Swing the MS Runner Jib to the right side, for Lifting Configuration, and lock it in place with pins from **bag 4**.



2. LATTICE SWING-AWAY JIB

Place the Jib on the boomhead and lock it in place, on both sides, with the pins from **bag 4**.



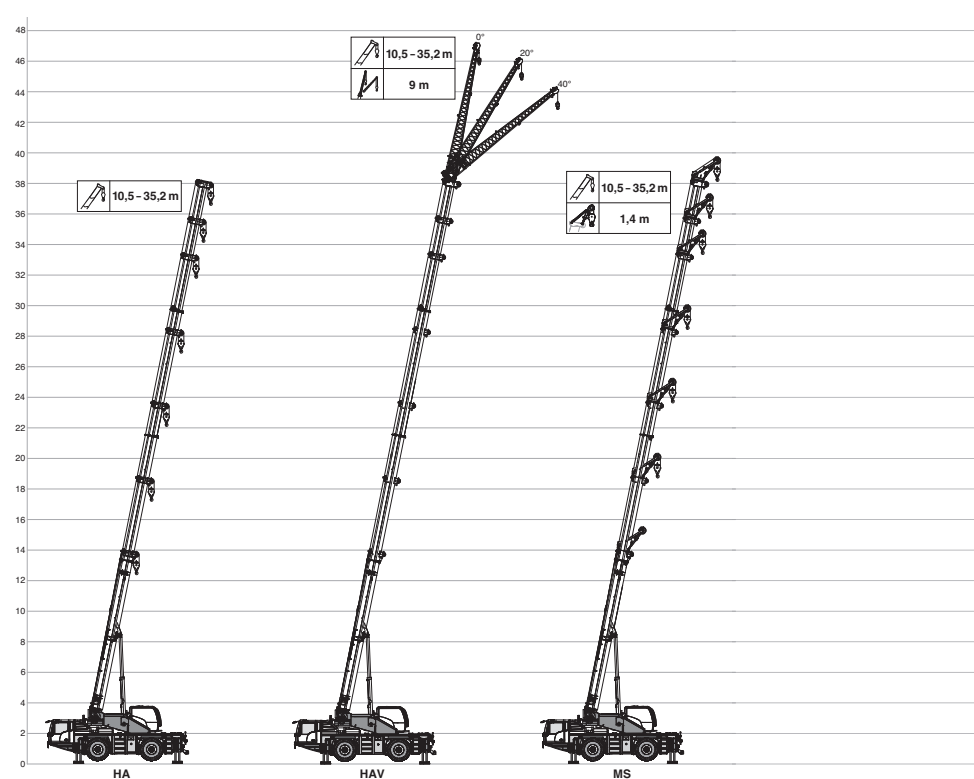
3. LATTICE SWING-AWAY JIB

The Jib can be angled in a 20 degree and 40 degree angle, and fixed in place with pins from **bag 2**.



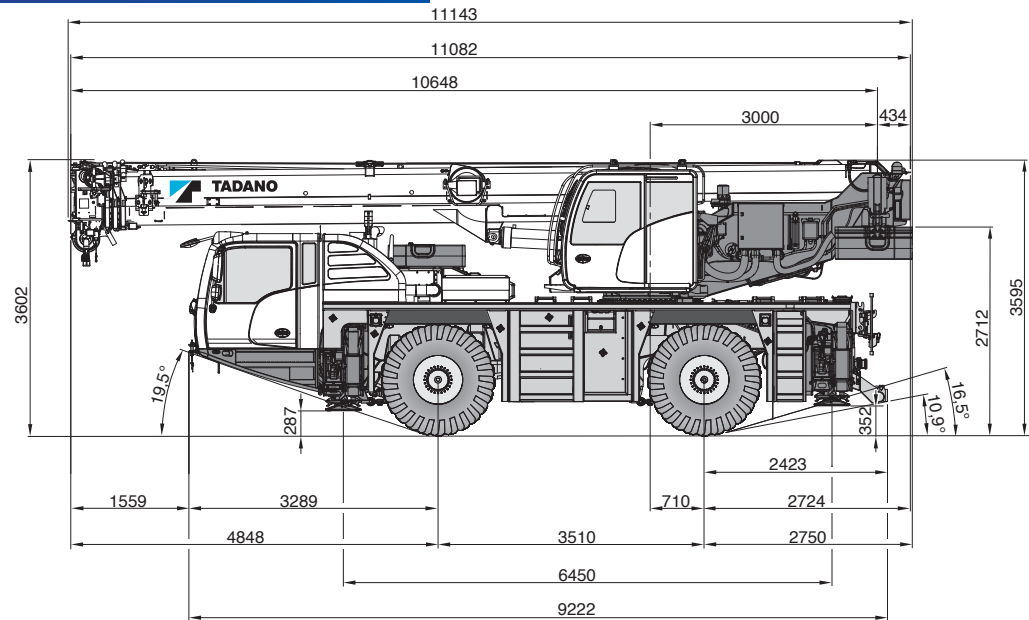
READY TO START LIFTING!

The crane is now build with
the Jib configuration.





DIMENSIONS



Enjoy the little things!

If you have any questions, don't
hesitate to contact us via:

www.imcmodels.eu

info@imcmodels.eu

facebook.com/imcmodels.eu

For service and repairs, contact our
service team via:

www.imcmodels.eu > Service

or email to service@imcmodels.eu



Industrial Merchandising Concepts B.V.

HEAD OFFICE
Peppelkade 23
3992 AL Houten
The Netherlands

+31 (0)30 721 0661
info@imcmodels.eu