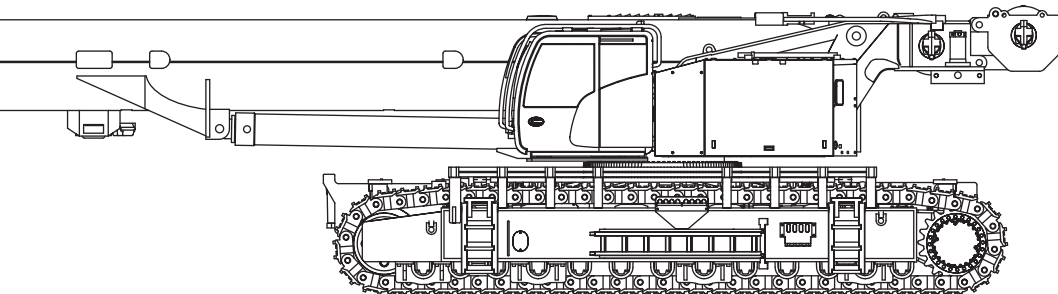


# Build manual



**TADANO GTC-2000**  
TELESCOPIC BOOM CRAWLER CRANE



# Tadano GTC-2000

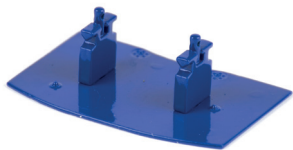
## Build index

●	Main components	4-5
○	Tools and pins	6-7
○	Configure the model to operational mode	8-16
○	Configure the model to transport mode	17-19
○	Product data	20-21
○	Contact and service	23

# Main components



Basic crane



Counterweight base plate



Counterweight plates



Central ballast rear/front



Head sheave



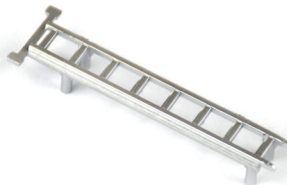
Hoist H2



Main boom extension



Hook weight

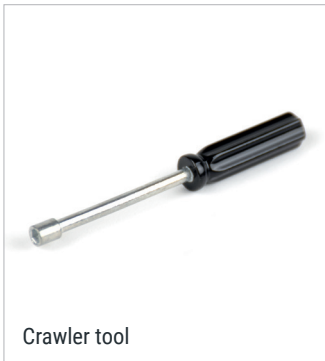


Support ladder

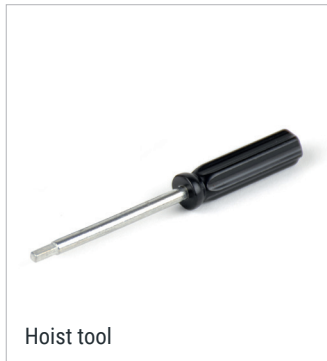


Hoist motor covers

# Tools and pins



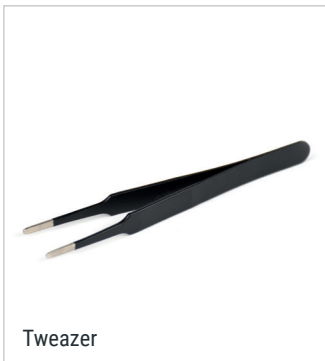
Crawler tool



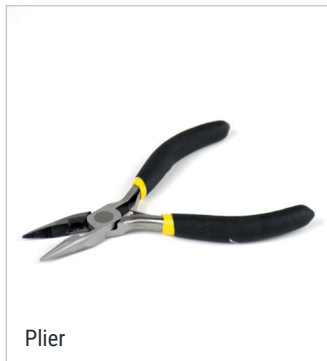
Hoist tool



Hex tool



Tweezer



Plier



Pin bag 1 (4 pieces)



Pin bag 2 (14 pieces)

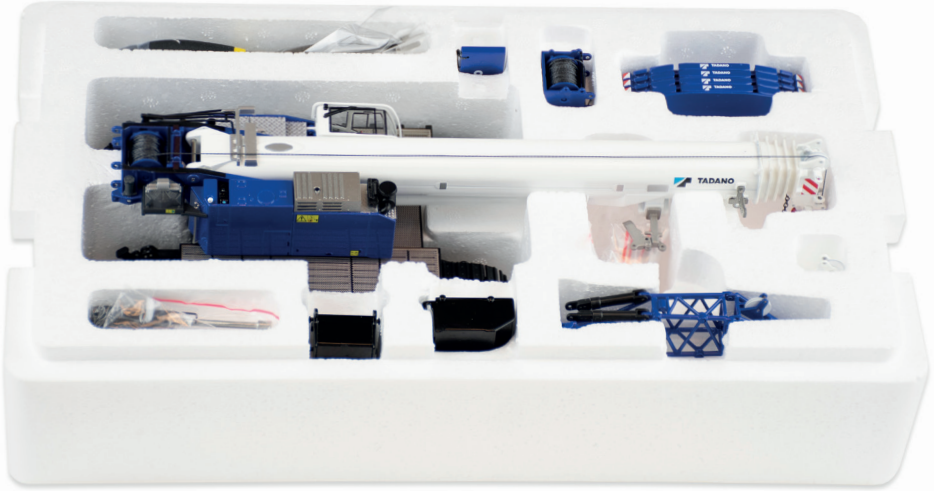


Pin bag 3 (14 pieces)



Pin bag 4 (2 pieces)

Your model content:





# Configure the model to operational mode

1

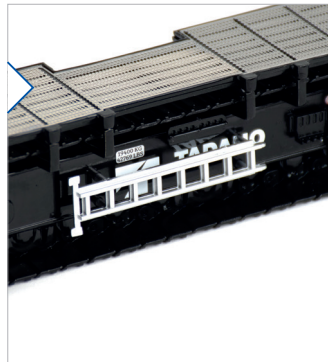
Fully extend the platform so your operator can enter the cab. This is done by tilting the cab and grabbing the platform with the plier tool.



2

All crawlers are equipped with ladders to assist your operator in climbing the crane base.

A multifunctional support ladder can be stowed on the crawlers or used during reeving.



3

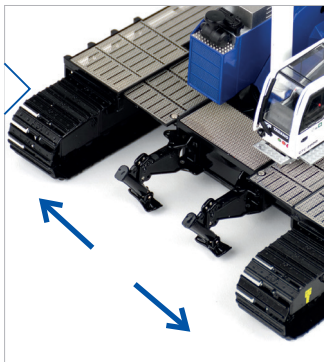
Lift the main boom into an upright position and lock it with the hex key.



4

Extend the sliding girders and set the crawlers to the maximum width (A).

To manoeuvre on narrow jobsites, our model also features a narrow (B) and independent configuration (C).



A. Wide



B. Narrow



C. Independent



5

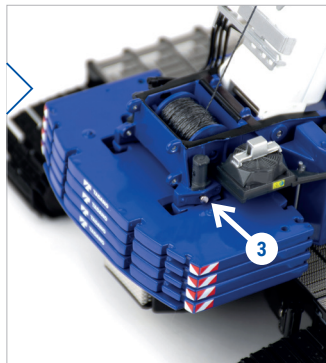
Secure all four outriggers and lock the top side with pin 2 and the angled bottom with pin 3.



6

The front and rear central ballast can be hooked to the lower body.

The counterweight base plate and the counterweight plates can be positioned on the front central ballast, lifted upwards and connected with pin 3 to the rear of the upperstructure.



7

Both hoist 1 and the optional hoist 2 can be operated with the hoist tool. After operating, both hoists can be fitted with the hoist motor part.

Hoist 2 can be connected with pin 2. This allows you to operate with a main boom extension or the head sheave option simultaneously.



8

The optional head sheave can be mounted on the main boom (pin 3) during transport and operations.

When not in use, it can be folded to the side by only attaching one pin.



Ready for lifting!



10

The optional jib can be mounted on the main boom (pin 1) during transport and operations when not in use.

The jib support frame on the main boom can be locked in place with pin 4.



11

To operate the jib, attach the bottom two connections with pin 1. Next, extrude the black pistons and attach them to the boom head with pin 2.





12

All telescopic sections can be pinned at 0%, 45% and 100% of their possible extension lengths.

The bottom of each section has pressure points to lock each section.



13

To lower the telescopic sections, first extend all five sections to 100% before sliding down. Start from the top section, down to the main boom.

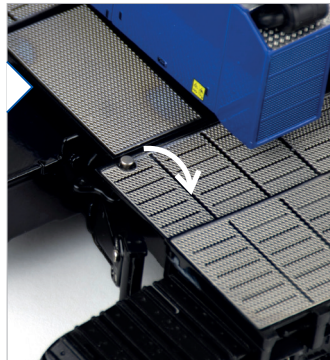




# Configure the model to transport mode

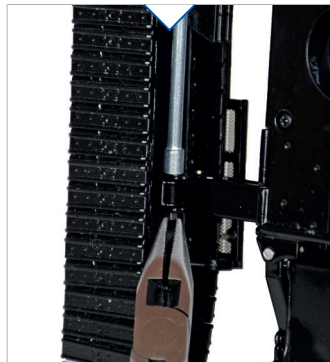
15

Remove the crawlers by tilting and retracting the crawler platforms. Next, unscrew the nuts and bolts at the bottom of each attachment point with the crawler tool. Each crawler is connected at two points to the sliding girders.



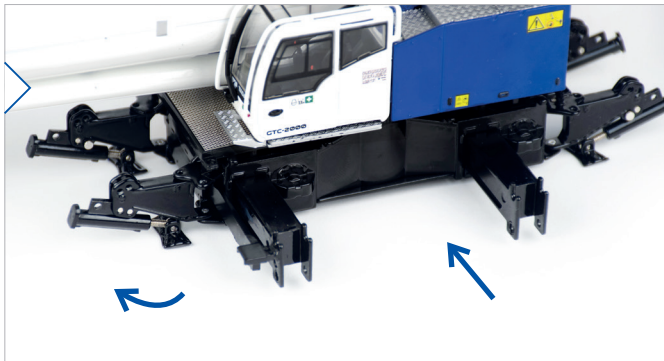
14

Remove the counterweight plates and base plate from the rear and detach both front and rear central ballasts.



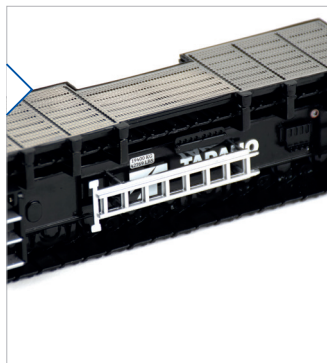
16

The sliding girders can be retracted and the outriggers folded to the center and locked in place.



17

The separate ladder supplied with the model can be used during assembly and deassembly. After use it can be stowed to one of the crawlers.



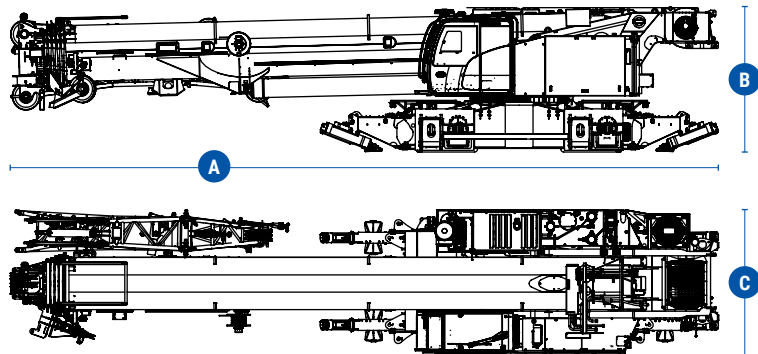


On to the next job!

## Product data

To realistically transport your scale model across multiple low loaders, we've added a handy weight and dimensions chart.

Quantity	Description	Weight (t)
1	Basic crane with intermediate section, incl. sliding spars.	47.6
2	Left-hand/right-hand crawler track carrier	18.5
2	Central ballast, rear/front	7.5
4	Counterweight plate	10
1	Counterweight base plate	5
1	Hoist H2	2.26
1	Hook block	1.1
1	Hydraulic main boom extension	2.5



Position	Real crane (m)	Model crane (cm)
A	14.86	29.72
B	3.03	6.06
C	2.99	5.98



Enjoy the little things!

If you have any questions, don't  
hesitate to contact us via:

[www.imcmodels.eu](http://www.imcmodels.eu)

[info@imcmodels.eu](mailto:info@imcmodels.eu)

[facebook.com/imcmodels.eu](https://facebook.com/imcmodels.eu)

For service and repairs, contact our  
service team via:

[www.imcmodels.eu](http://www.imcmodels.eu) > Service

or email to [service@imcmodels.eu](mailto:service@imcmodels.eu)



Industrial Merchandising Concepts B.V.

HEAD OFFICE  
Peppelkade 23  
3992 AL Houten  
The Netherlands

+31 (0)30 721 0661  
[info@imcmodels.eu](mailto:info@imcmodels.eu)