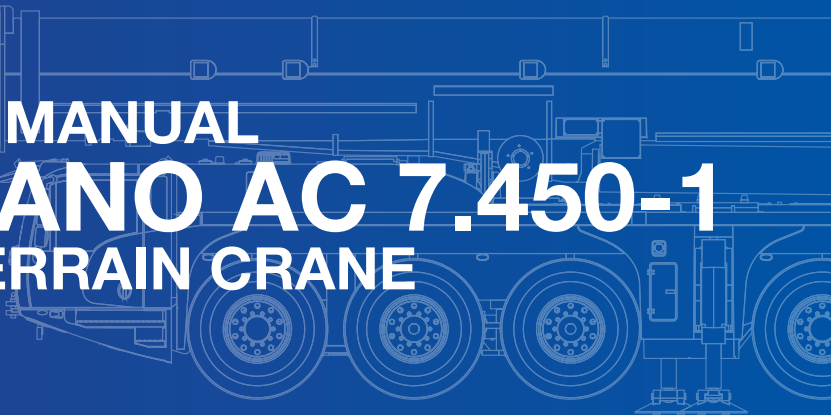




BUILD MANUAL

TADANO AC 7.450-1

ALL TERRAIN CRANE



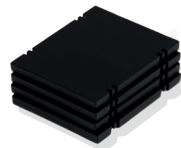
Tadano AC 7.450-1

Build index

●	Model content	2
	Model and parts	2
	Tools and pins	4
○	Assembly	8
	Transport mode	9
	Operational mode	10
	SSL System	20
○	Product information	26
○	Contact	29

MODEL CONTENT

Main components



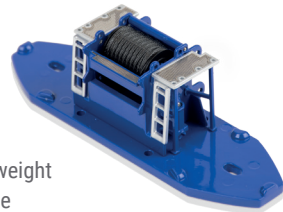
Outrigger Mats



Hook Weight



Railings



Counterweight Baseplate



Counterweight Plates



Basic crane

Tools & Pins



Plier



SSL Winch key



Hex key



Tweezer



Winch key



Nuts & Bolts key



Pins bag 1



Pins bag 2



Pins bag 3



Pins bag 4

ASSEMBLY

Transport mode

In transport position there are two options to display the Tadano model.



TRANSPORT CONFIGURATION



TRANSPORT CONFIGURATION WITH SSL

1. Steering

The crane has proportional steering, but it also includes the counter wise 'crab-like' steering option to make manoeuvring on job sites easier.



REGULAR STEERING



'CRAB-LIKE' STEERING

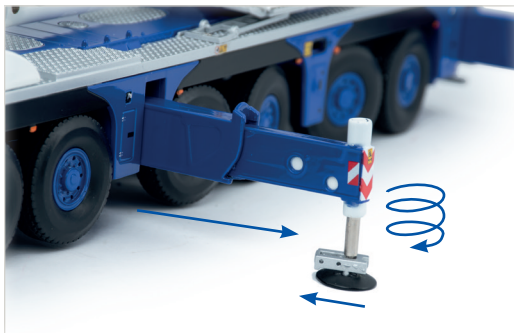


CORNER STEERING

2. Operational mode

2.1 OUTRIGGERS

Extend the outriggers outwards. Secure the outrigger pads in the middle position (You should feel a click) and lower the outriggers by screwing them down clockwise.



NOTE: when in transport mode, place the pads in their transport mode position.

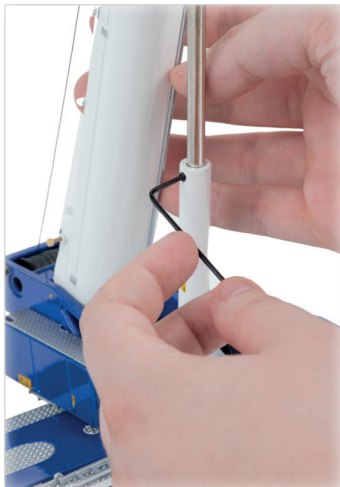
2.2 OUTRIGGER MATS

Put the crane on the outrigger mats. The mats should be placed with the lifting hooks positioned downwards.



2.3 LIFTING THE BOOM

Position the boom upwards in your preferred angle and secure it by fixing both hexagon bolts in the boom cylinder with the Hex Key.



2.4 LADDERS

The ladders can be positioned downwards by prying them up a little, turning them to the side and folding to the side of the carrier.



2.5 BASE PLATE ATTACHMENT

Optionally the counterweight baseplate can be positioned on the main body for a realistic configuration.

To connect the baseplate to the crane, **use pins from bag 1 with the tools.**

2.6 PLACEMENT RAILING

Place the railings on the upperstructure and counterweight baseplate.

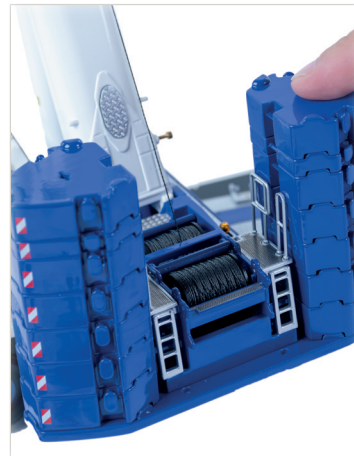


2.7 CABIN POSITION

Angle the cabin upwards and pull out the side step with the tools.

2.8 COUNTERWEIGHTS

Place the counterweights on the baseplate.



2.9 WIND DOWN THE HOOK

Use the winch key to wind down the hook. Push in to unwind the winch to keep tension on the rope to prevent the wire from jumping off the sheaves. This can be done manually or by hanging the hook weight on the hook.

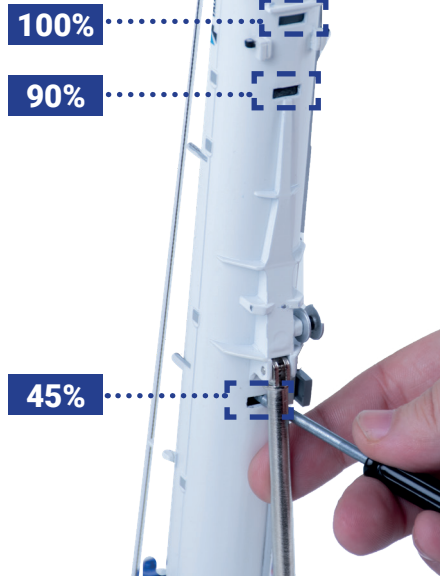


2.10 EXTENDING THE BOOM

Now carefully pull out the telescopic boom while maintaining tension on the hook ropes.

Start with the first boom section, this boom allows for **100% extension**, but also has the **45% and 90% extension option** build into the telescopic boom sections. This will result in the boom section securing themselves in the **45% position** first.

You can use the **winch key** to push the trigger inwards so you can proceed extending the boom to the fully extended position.



2.10-1 RETRACTING

To retract the boom fully you will need to extend the boom to **90%** setting for each boom section. Then start retracting the top boom first and work your way down. Doing this gives you access to the **45% spring lock**.



2.11 SECURING THE ROPE

When the sections are set to the preferred height. Connect the rope with the security chain hanging from the end of the boomhead.



2.12 WIND SPEED INDICATOR

Pressure fit the wind speed indicator on top of the boom.

READY TO START LIFTING!

The crane is now build in the normal operational configuration.



3. SSL System

PARTS NEEDED

The SSL system exists out of 3 pendants and a separate arm for both sides of the crane.



Winch key



SSL system



Short pendants



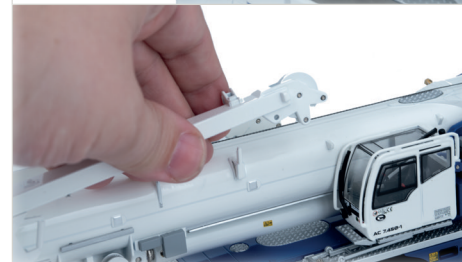
Middle pendants



Long pendants

3.1 PLACEMENT

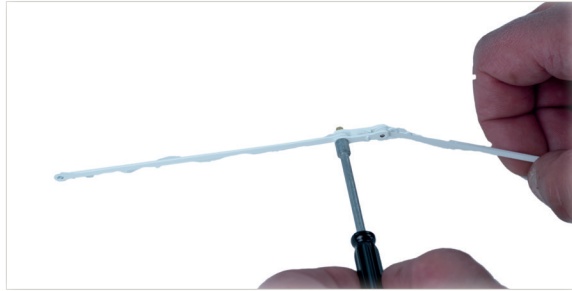
Place the SSL arms on the brackets on both sides of the mainboom with pins from bag 2.



Remove the bolts off the mainboom to secure the shortest pendants to the lower section of the boom. Use the same screws you removed.

3.2 PENDANTS

Connect the other two pendants with the nuts and bolts from bag 4.



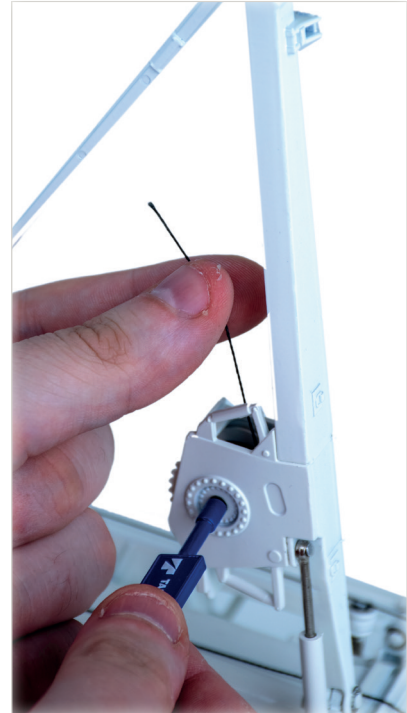
3.3 CONNECT THE PENDANTS

Then connect the complete pendant line to the SSL arm with the nuts and bolts from bag 3.



3.4 REEVE THE SSL SYSTEM

To reeve the SSL system, unwind sufficient rope from the SSL winch drum with the the Winch key.





3.5 SECURING THE ROPE

Make sure you keep tension on the rope to prevent the rope jumping off the winches.

Feed the rope trough the sheave at the end of the SSL and tie the rope to tie-off point on both sides of the boomhead.

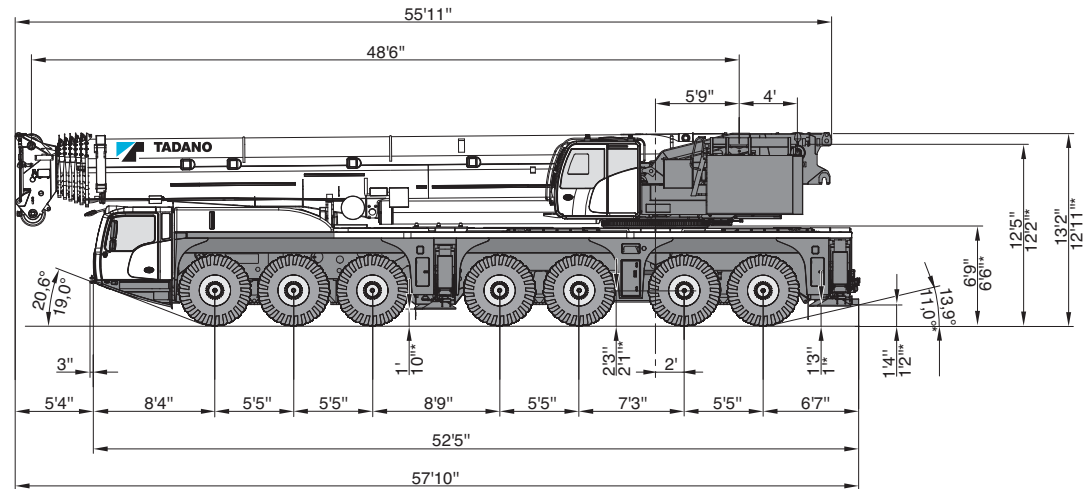


READY TO START LIFTING!

The crane is now build in the SSL configuration.

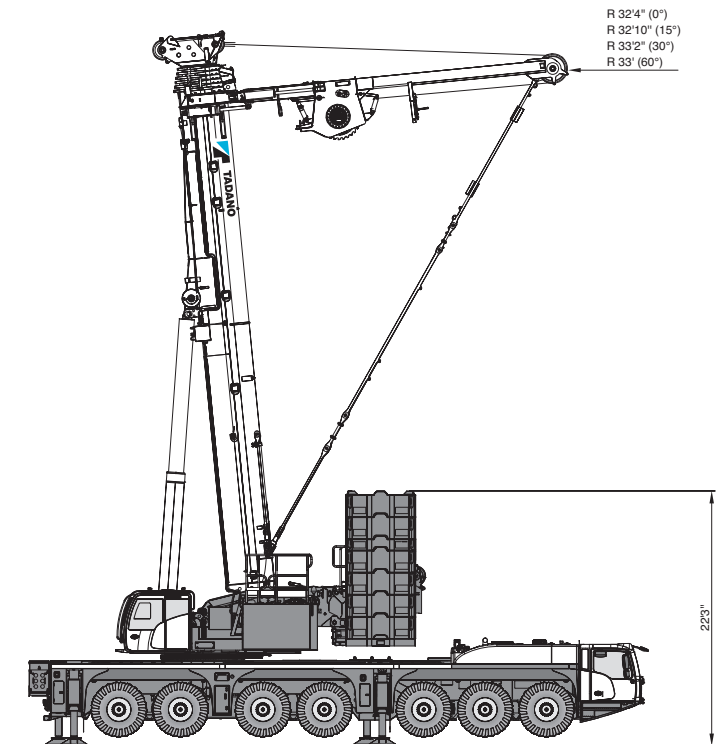


DIMENSIONS



⊙ 445/95 R25 / 525/80 R25

* ⊙ 385/95 R25



Enjoy the little things!

If you have any questions, don't
hesitate to contact us via:

www.imcmodels.eu

info@imcmodels.eu

facebook.com/imcmodels.eu

For service and repairs, contact our
service team via:

www.imcmodels.eu > Service

or email to service@imcmodels.eu



Industrial Merchandising Concepts B.V.

HEAD OFFICE
Peppelkade 23
3992 AL Houten
The Netherlands

+31 (0)30 721 0661
info@imcmodels.eu